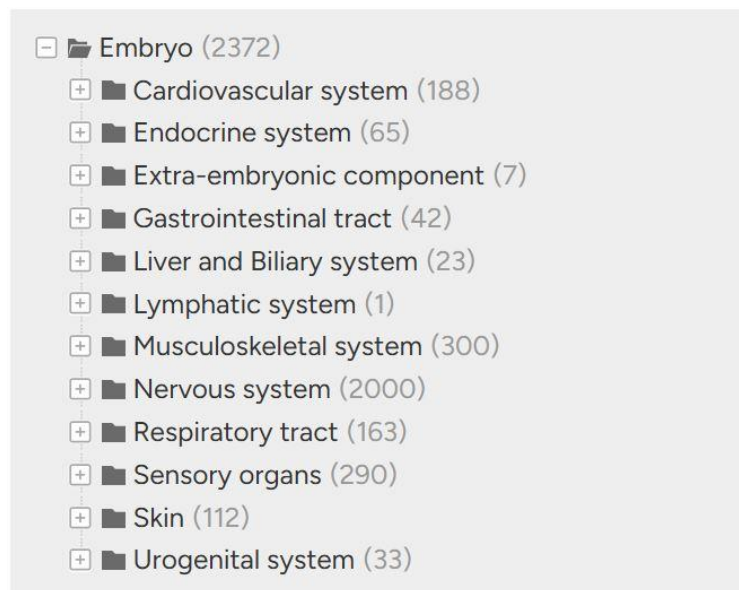
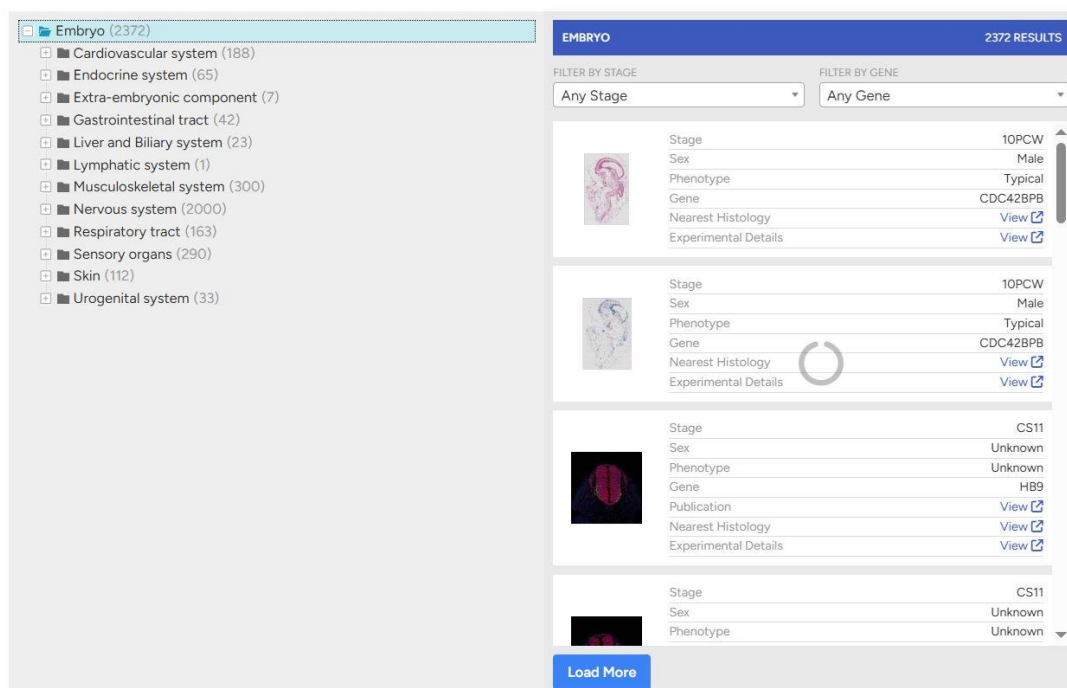


How to use the HDBR Gene Expression Portal

To get started select an anatomy term on the left-hand panel. The numbers in brackets refer to the number of images with expression in that tissue.



- Clicking on Embryo will show all results.



- The results can be refined to a tissue of your choice by clicking on the + symbol to expand the folders.

PERIPHERAL NERVOUS SYSTEM 153 RESULTS

FILTER BY STAGE: Any Stage

FILTER BY GENE: Any Gene

	Stage	CS23
	Sex	Male
	Phenotype	Typical
	Gene	CEP164
	Publication	View
	Nearest Histology	View
	Experimental Details	View
	Stage	CS19
	Sex	Male
	Phenotype	Typical
	Gene	MKI67
	Nearest Histology	View
	Experimental Details	View
	Stage	CS19
	Sex	Male
	Phenotype	Typical
	Gene	MKI67
	Nearest Histology	View
	Experimental Details	View
	Stage	CS22
	Sex	Female
	Phenotype	Typical
	Gene	MKI67

[Load More](#)

- The results can be further refined by selecting a gene and/or a developmental stage.

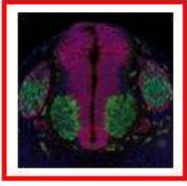
PERIPHERAL NERVOUS SYSTEM 14 RESULTS

FILTER BY STAGE: Any Stage

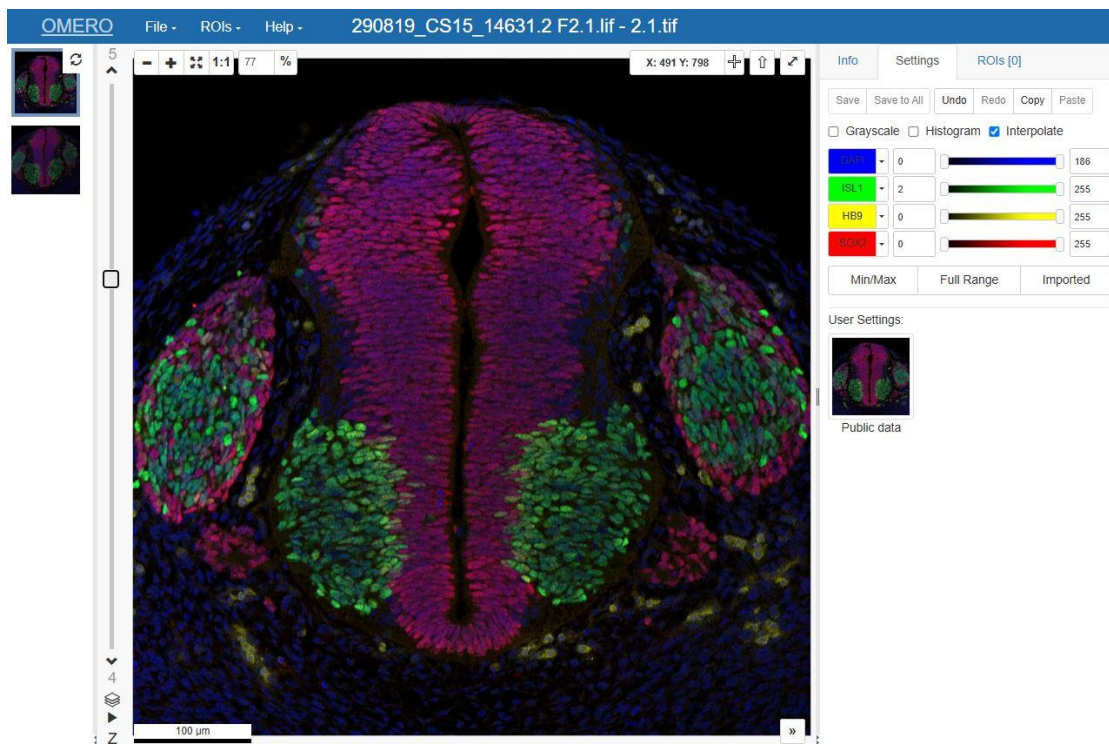
FILTER BY GENE: SOX2

	Stage	CS15
	Sex	Unknown
	Phenotype	Unknown
	Gene	SOX2
	Publication	View
	Nearest Histology	View
	Experimental Details	View
	Stage	CS15
	Sex	Unknown
	Phenotype	Unknown
	Gene	SOX2
	Nearest Histology	View
	Experimental Details	View

- Click the thumbnail image to launch the IDR viewer in a new tab.

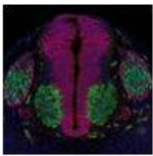


Stage	CS15
Sex	Female
Phenotype	Typical
Gene	SOX2
Publication	View
Nearest Histology	View
Experimental Details	View

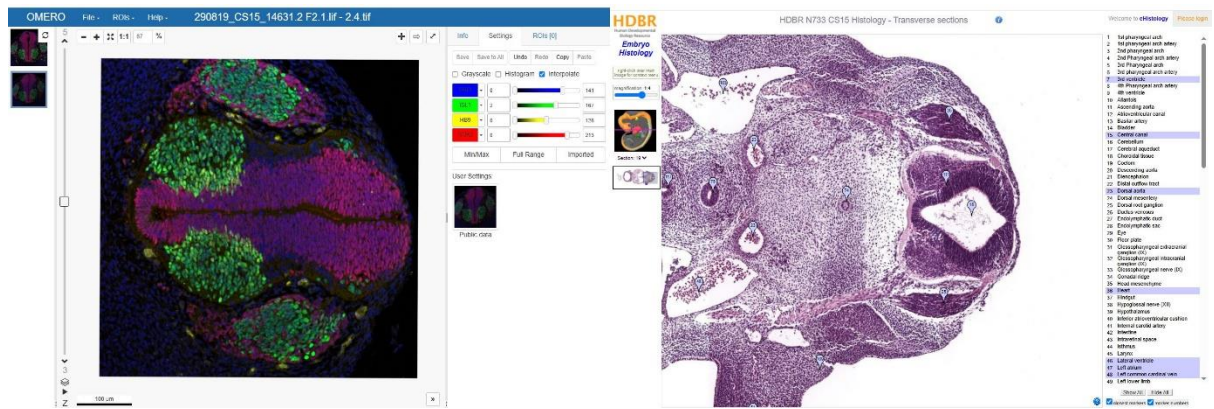


If necessary, the image can be rotated by holding down shift and dragging with the mouse.

- To help with orientation and interpretation of the results the gene expression image can be compared with the closest eHistology image:

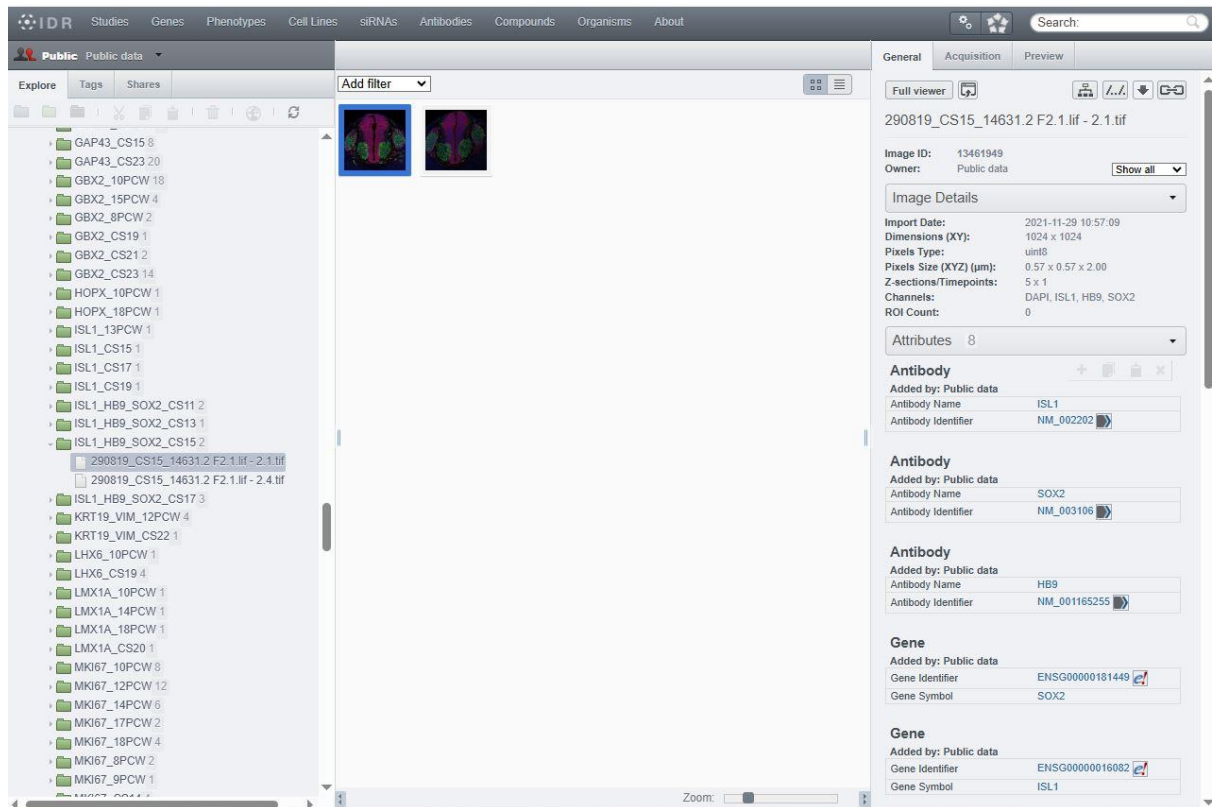


Stage	CS15
Sex	Female
Phenotype	Typical
Gene	SOX2
Publication	View
Nearest Histology	View
Experimental Details	View

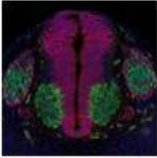





The two tabs can then be compared side by side.

- Selecting “Experimental Details” allows you to see the assay details and other images in the same dataset.



- If there is a publication associated with the data, it can be viewed here:

	Stage	CS15
	Sex	Female
	Phenotype	Typical
	Gene	SOX2
	Publication	View 
	Nearest Histology	View 
	Experimental Details	View 

For any further information, or to give feedback, please contact **hdbbr@newcastle.ac.uk**